





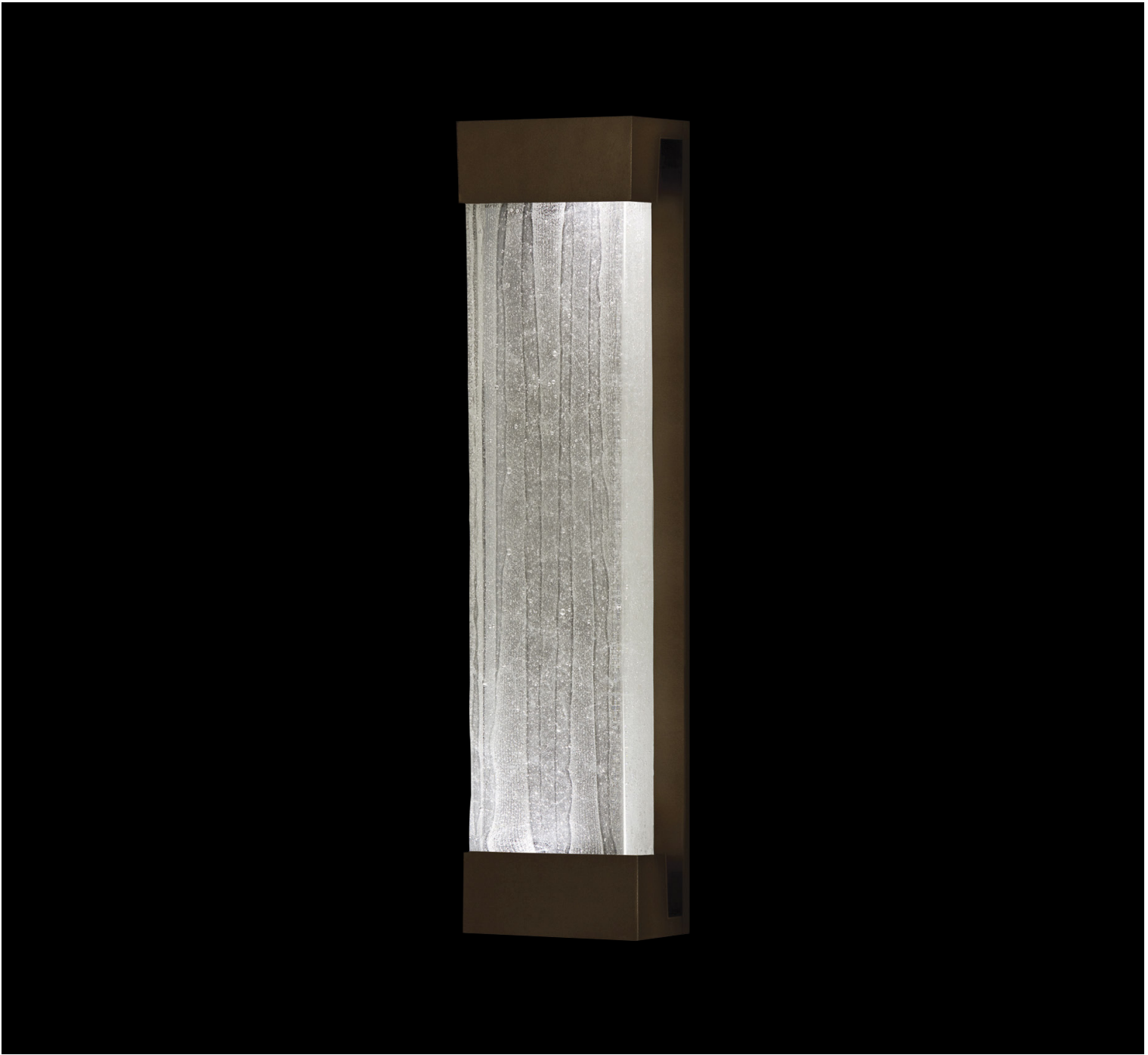
CRYSTAL BAKEHOUSE

In Fine Art's glass department, a "bakehouse" for crystal has been created by our glass makers, giving its name to a new concept of art-glass lighting. A five-day process of hand-creating crystal spires, then baking and annealing for several days at high temperatures to form a massive block which is then carefully polished. Bubbles and seeds formed naturally in the slow bakehouse process add to the dynamic effect when the slabs are illuminated by a light sources. The entire crystal composition comes to life. Available in Indoor/Outdoor silver and bronze finishes, and standard silver and standard gold leaf (Indoor only) with Crystal Spires.

*Wall fixtures provide up and down wall washer lighting through translucent panels at each end. Standard silver leaf and standard gold leaf finish is for Indoor use only. See page 383 for additional Indoor/Outdoor finish options.

OUR STUDIO GLASS IS INDIVIDUALLY HANDMADE.

In all studio glass, slight variations in shape, size, markings and bubbles are inherent in the process, and are the characteristics that distinguish handmade studio art glass from mass produced glass work.



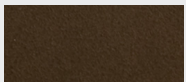
30" SCONCE

Model #
811150-14 Bronze/Crystal Spires

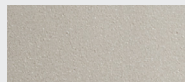
Dimensions
H 30" (76 cm) W 7" (18 cm) D 4" (11 cm)
ADA Compliant

Electrical
US: B10 INTL: CFL Mini Spiral or LED | Candelabra, 13w max (Qty. 2)

FINISH OPTIONS Also available in our five Standard Finish Options for Indoor only. See pg 402.



Bronze
(-1x) Indoor/Outdoor



Silver
(-2x) Indoor/Outdoor



Standard Silver Leaf
(-3x) Indoor only

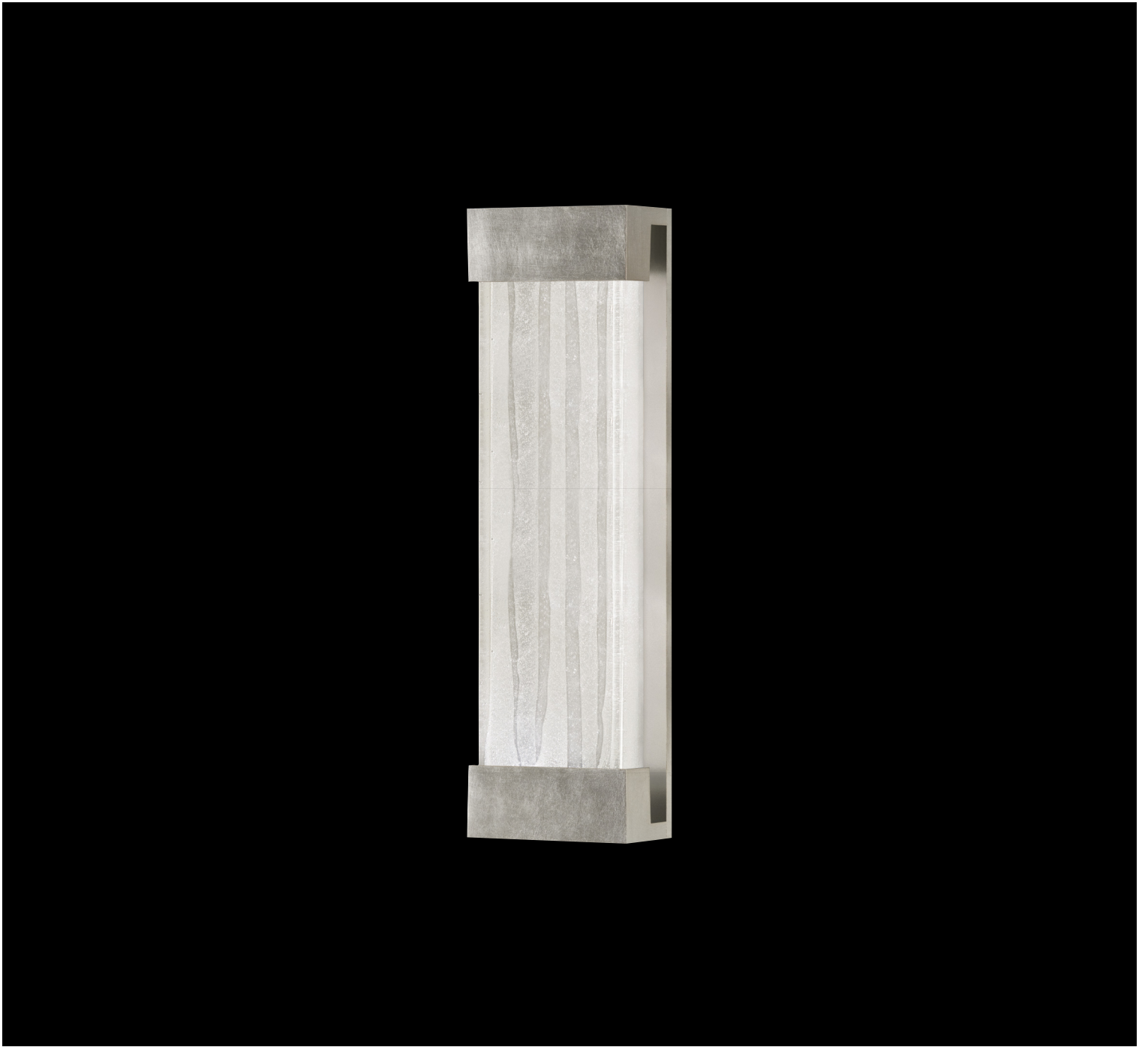


Standard Gold Leaf
(-4x) Indoor only

GLASS OPTIONS



Crystal Spires
(-x3) ADA Compliant



24" SCONCE

Model #

811050-33 Silver Leaf/Crystal Spires

Dimensions

H 24" (61 cm) W 7" (18 cm) D 4" (10 cm)

ADA Compliant

Electrical

US: B10 INTL: CFL Mini Spiral or LED | Candelabra, 13w max (Qty. 2)

US/INTL bulbs are not included for all items in this collection. Dimmable bulbs are not recommended because the optimum lighting effect has been chosen in the bulb specification.

Due to heat constraints use only LED or CFL bulbs. Do not use an incandescent bulb.